

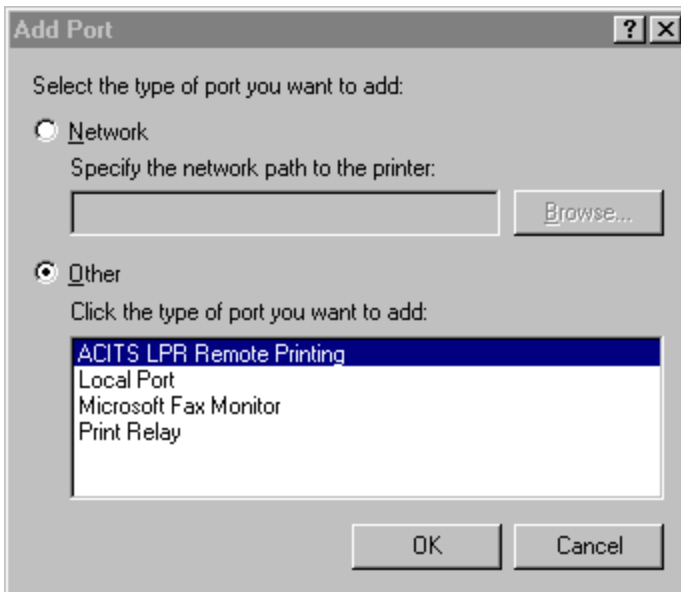



Creating an ACITS LPR Remote Printer

1. Click on the Start Menu, select **Settings**, and then select  **Printers**.
2. Double click on **Add Printer**. The  **Add Printer Wizard** leads you through the installation process of setting up and configuring a printer.



3. Add a **Local printer** and select the appropriate printer driver for the **ACITS LPR Remote Printer** you are installing.
4. Select **LPT1**: for the printer port or an **ACITS LPR Remote Printer** if you have already created a remote printer.
5. Type name for printer. The name can be anything you find convenient to remember.
6. Click on the **NO** radio button when prompted about **Printing a Test Page**, then click on the **Finish** button to install any required printer drivers and create the printer.
7. Next, right click on the newly created printer icon in the **Printers Folder** and select **Properties**.
8. If you plan to use the **Send client generated banner page** you may want to fill in the printer's **Comment** box. You may want to include enough information to help you identify which computer the job was sent from. This information will be included on banner pages **generated by ACITS LPR Remote Printing**.
9. Click on the **Details** menu tab then on the **Add Port** button. Click the **Other** radio button and select **ACITS LPR Remote Printing**.



10. Fill out the printer information. If you are unsure about some of the settings either click on the  button or consult your Network Administrator. Click the **OK** button when you are finished. You may create up to **32** different **ACITS LPR Remote Printing** printer entries.

The screenshot shows the 'Add ACITS LPR Remote Printer' dialog box with the 'Settings' tab selected. The dialog has three tabs: 'Settings', 'LPR Options', and 'Paper Options'. The 'Settings' tab contains the following fields and controls:

- Host name or IP address:** A text input field.
- Printer/Queue name:** A dropdown menu.
- Local Ports:** A dropdown menu set to 'Default'.
- Remote Port:** A text input field set to '515'.
- Timeout (in secs.):** A dropdown menu set to '120'.
- Retry Attempts:** A dropdown menu set to '3'.
- Automatically attempt job resubmission**
- Enable stand alone mode**

At the bottom of the dialog, there is a version indicator 'v3.4', and 'OK' and 'Cancel' buttons. A 'Verify Printer Information' button is located to the right of the 'Host name or IP address' field.

- Next, click on the **Spool Settings** button. Make sure the **Spool print jobs so program finishes printing faster** radio button is selected and then select the **Start printing after last page is spooled** radio button.

The screenshot shows the 'Spool Settings' dialog box. It contains the following options and controls:

- Spool print jobs so program finishes printing faster**
- Start printing after last page is spooled**
- Start printing after first page is spooled**
- Print directly to the printer**
- Spool data format:** A dropdown menu set to 'RAW'.
- Enable bi-directional support for this printer**
- Disable bi-directional support for this printer**

At the bottom of the dialog, there are 'OK', 'Cancel', and 'Restore Defaults' buttons.

- In the **Spool data format** combo-box, make sure the data format of the printer output is set to **RAW**.
- Also make sure that the **Disable bi-directional support for this printer** radio button is selected. This option is greyed out or missing for some printers.
- Click on the **OK** button to return to the **Properties** dialog and then click **OK** to save your printer settings. The printer is now configured for **ACITS LPR Remote Printing**.